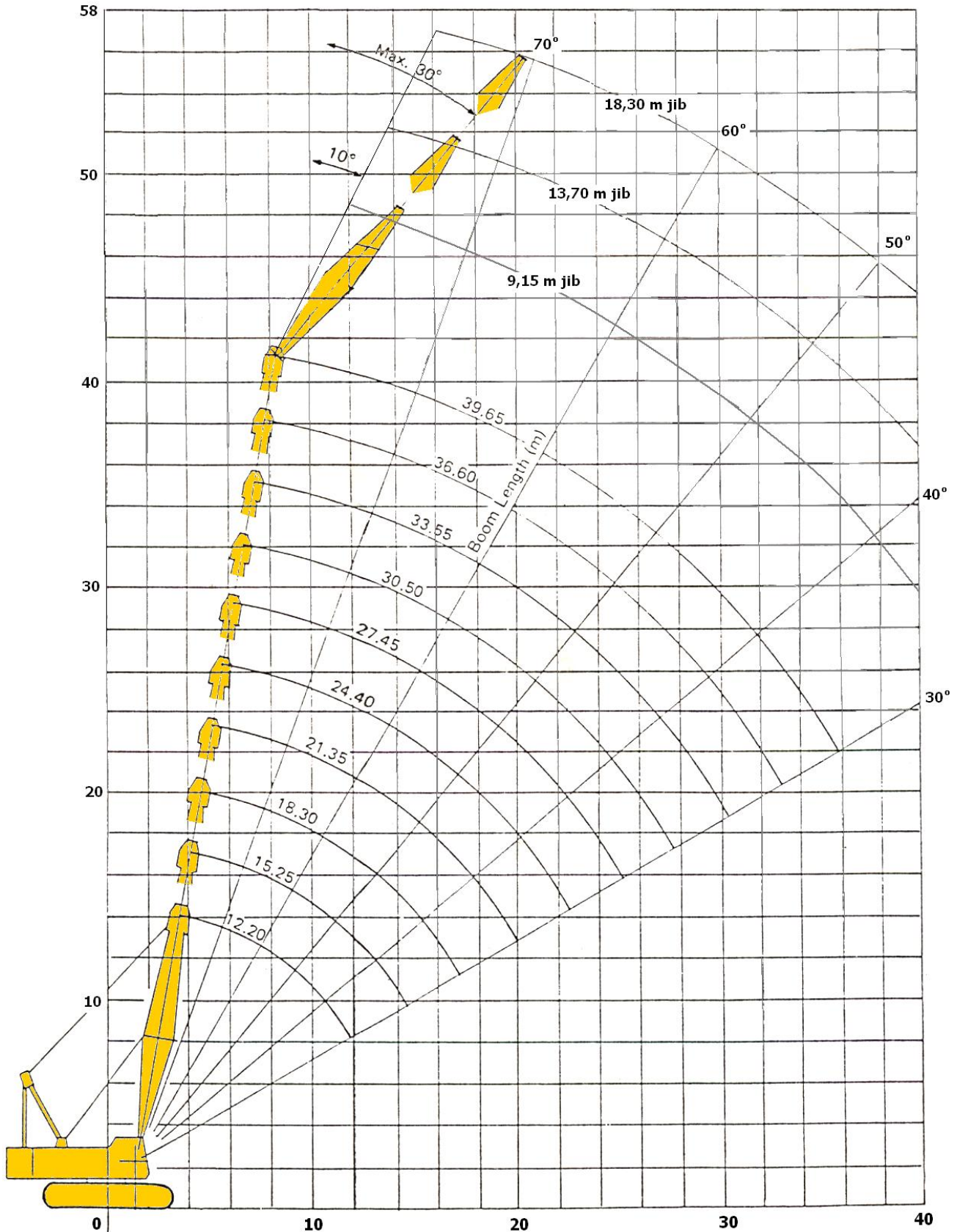


# Sumitomo LS-218RH<sub>5</sub> + Jib 18.30 m

**Nostoteho**      **80 t**  
**Nostosäde**     **36 m**  
**Nostokorkeus** **55 m**



## Peruspuomi

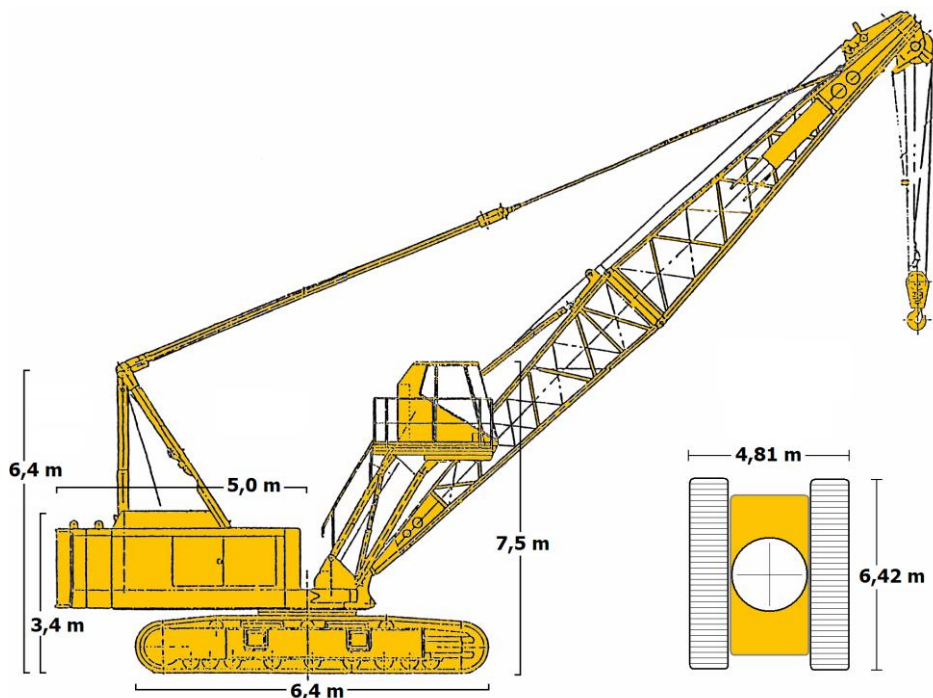
Säde	12.20	15.25	18.30	21.35	24.40	27.45	30.50	33.55	36.60	39.65
3.5	80.0									
4.0	72.8									
4.5	62.0	61.9								
5.0	54.5	54.5	51.5							
6.0	40.9	40.8	40.7	40.2	38.2					
7.0	32.6	32.5	32.4	32.3	32.2	31.3				
8.0	26.9	26.8	26.7	26.6	26.5	26.4	26.0	25.5		
9.0	22.9	22.8	22.7	22.6	22.5	22.5	22.4	22.1	21.7	21.2
10.0	19.9	19.8	19.7	19.6	19.5	19.5	19.4	19.3	19.2	18.8
11.0	17.6	17.5	17.4	17.3	17.2	17.1	17.1	17.0	16.9	16.8
12.0	15.7	15.6	15.5	15.4	15.3	15.3	15.2	15.1	15.0	15.0
14.0		12.7	12.6	12.5	12.4	12.4	12.3	12.2	12.1	12.0
16.0			10.6	10.5	10.4	10.3	10.3	10.2	10.1	10.0
18.0			9.1	9.0	8.9	8.9	8.8	8.7	8.6	8.5
20.0				7.9	7.8	7.7	7.6	7.5	7.4	7.3
22.0					6.8	6.7	6.7	6.6	6.5	6.4
24.0						6.0	5.9	5.8	5.7	5.6
26.0							5.2	5.1	5.0	4.9
28.0							4.6	4.5	4.4	4.3
30.0								4.0	3.9	3.8
32.0									3.4	3.3
34.0										2.9
36.0										2.5

## Peruspuomi 39.65 + Jib

Jibin pituus	9.15 m		13.70 m		18.30 m	
Säde	10°	30°	10°	30°	10°	30°
11.0	10.0					
12.0	10.0		6.2			
14.0	10.0	5.0	6.2			
16.0	9.2	5.0	6.2	5.0	4.0	
18.0	8.1	5.0	6.2	5.0	4.0	
20.0	7.0	5.0	6.2	5.0	4.0	3.2
22.0	6.1	5.0	6.1	5.0	4.0	3.2
24.0	5.3	5.0	5.3	5.0	4.0	3.2
26.0	4.7	4.7	4.7	4.7	4.0	3.2
28.0	4.2	4.2	4.2	4.2	4.0	3.2
30.0	3.8	3.8	3.8	3.8	3.8	3.2
32.0	3.4	3.4	3.4	3.4	3.4	3.2
34.0	3.0	3.0	3.0	3.0	3.0	3.0
36.0	2.7	2.7	2.7	2.7	2.7	2.7

Peruspuomin taulukosta tehtävät vähennykset nostokoukkujen / Jibin ollessa asennettuna.

Koukku	80 t	30 t	10 t	Jibin pituus	9.15 m	13.70 m	18.30 m
Omapaino	1.10 t	0.64 t	0.40 t	Omapaino	1.50 t	2.10 t	2.80 t



Sumitomo LS-218RH5

Paino 80 t